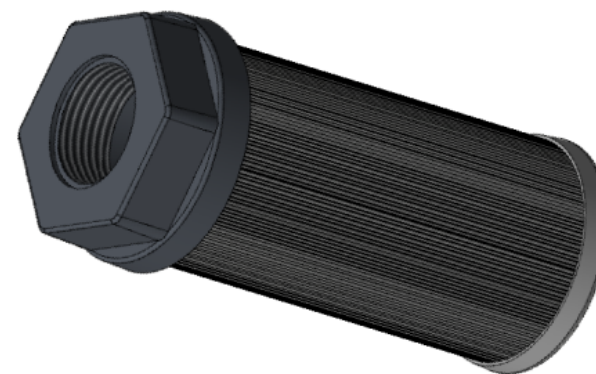


Part number	Port size	A	B	C	D
SE75111110 / SE75111111	G1/2	106	46	36	43
SE75221110 / SE75221111	G3/4	110	64	46	60
SE75231210 / SE75231211	G1	140	64	55	60
SE75351210 / SE75351211	G1½	140	86	65	82
SE75351310 / SE75351311	G1½	200	86	65	82
SE75361410 / SE75361411	G2	260	86	69	82
SE75461210 / SE75461211	G2	150	150	79	149
SE75471310 / SE75471311	G2½	212	150	90	149
SE75481410 / SE75481411	G3	272	150	100	149



Dimensions in mm